



Spout inserting machine

SI-Lab (*)



Description:

SI-Lab is a servo driven, semi-automatic spout inserting machine dedicated for pilot projects and small production runs. This machine handles and seals the pouch in a exactly the same way as our industrial spout sealing machines.

Possible Spout Position and Pouch Shape:

- Top and corner spout inserter, max. spout base width – 65mm. Special shapes of pouches are possible but can be subject to technical assessment.
- Pouch shape – square, round or shaped. In some cases special tooling for handling certain shapes will be needed.





Machine Specifications for this machine model SI-Lab



Pouch Dimensions (min – max)	
Width	65 – 320 mm
Length	70 – 400 mm

Description	Specifications
Type of pouches	Pre-made standing pouch, side seal pouch, bag of co-ex material or laminate material with inside PE or PP sealant layer. 100% mono material – PE or PP
Number of Feeding Stations	2
Number of Sealing Stations	1 to 2
Spout Position	Top Center & Corner
Pouch loading system	Manual
Spout inserting process	Automatic
Voltage	3 x 380 V
Frequency	50-60 Hz
Current Load	3 A
Power Line	16 A
Compressed Air	15 Lpm, 6 bar
Pouches per minute	+/- 10

Dimensions	
Machine weight	+/- 680 kg
Surface space needed	3,00 m x 2,00 m
Height needed	2,00 m





Machine Compliance:

- Machinery Directive 2006/42/EG
- Machine complies with EU, UL and CSA Standards upon request.
- CE marked

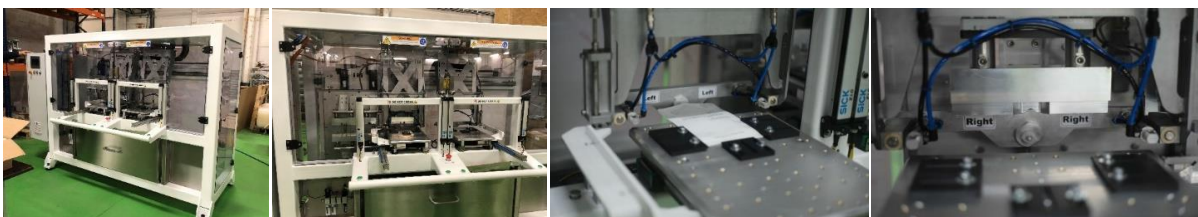
Features:

- Heavy duty construction.
- 2 infeed stations for more efficient production. Machine will be manually fed with pre-made standing pouch, three side seal pouch and side gusset pouch and selected spout.
- 1 or 2 sealing stations depending on pouch and spout material. The sealing is done via thermal sealing tools. The time, pressure, and temperature are adjustable servo controlled.
- 1 cooling station. The cooling is done via contour tools. The cooling time and pressure are adjustable.
- Flexible machine that can insert top and corner spout for a wide range of pouch sizes (width 65 – 320 mm and length – 70 – 450 mm) and film thickness from 60 to 350 µm
- Power connection – 3 x 380 V Y three-phase
- Compressed air – 15 LPM at 6 bar (90PSI)
- PLC/ HMI system – Beckhoff for operation and remote assistance.
- Servo motor - YASKAWA



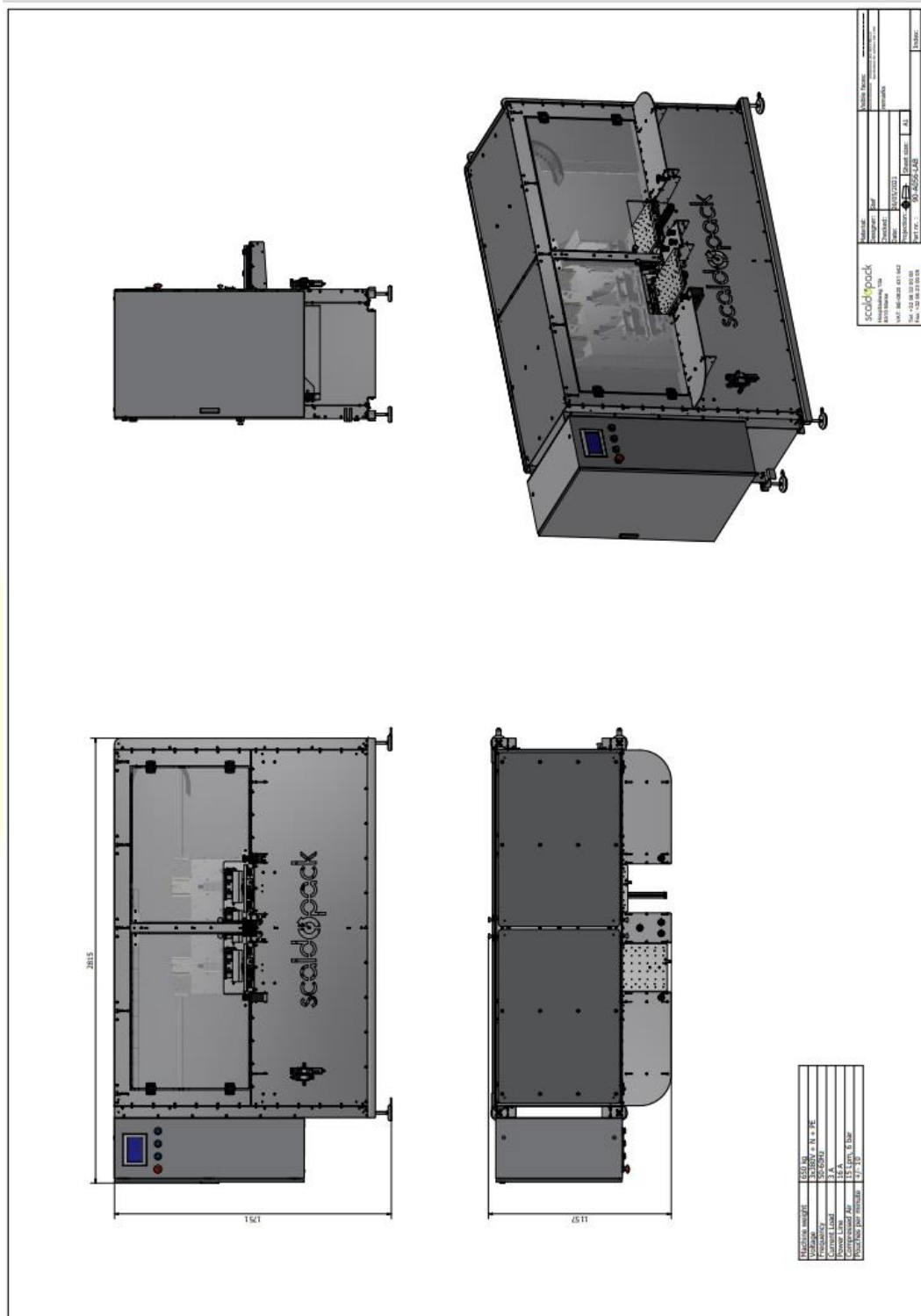
Advantages:

- Easy to operate, flexible and highly reliable process, allowing customers to confidently supply spouted pouches at competitive cost.
- Perfect platform for spouted pouches new players, customers with low volumes and/or converters in need to target specific applications at low investment.
- Machine replicates sealing performance of an industrial high-speed machine.
- Sealing and cooling jaws are interchangeable with those of high-speed SI-40 or SI-60 machine.
- Safe to operate machine.





Machine Layout:



(*) All information and measurements mentioned in this document are merely indicational and for informational purposes only. Information and measurements in this document can be subject to changes without further notice. For the latest info always revert to Scaldopack.