



# Smartfiller



## Description:

The smartfiller is a servo driven semiautomatic filling & capping machine fitted for small to medium size productions with 2 stations. 2 sensors detect the presence of the spouts. This allows an automatic start of the filling & capping without a foot pedal.

First the filling nozzle moves to the pouch to fill it through the spout. During that same movement the 3-finger gripper will pick up the cap. After filling has been completed, the capping tool, now loaded with a cap, will place the cap and tighten it. Tightening of the cap is done with a servo motor and with torque control. Once the first station is filed, the machine will continue to the second station and repeat the sequence.

The machine can handle both corner and top spouted pouches with volumes from 25 ml to 6.000 ml. With the help of optional tools, the machine can be changed over to handle different types of spouts, bottles, rigid containers (up to 5 liters).

Please consult us in advance if you would need different types. We can assess what parts need to be changed and accordingly we will make an offer to modify the machine





## Machine specifications for Smartfiller:

Pouch Dimensions (min – max)	
Width	65 – 320 mm
Length	90 – 400 mm
Pouch volume range	25 ml – 6.000 ml

Description	Specifications
Typical applications	Fluids and semi fluid foods & beverages, non-food fluids like motor-oils, cosmetics, pharmaceutical products
Buffer tank	Single wall buffer tank of 50 l Special tanks are available: double wall, heated, insulated, extra level sensors, closed tank
Dosing	Lobe pump, piston pump or peristaltic pump. Filling of product with temperatures up to 90 °C possible. Higher temperatures can be handled on demand. The pump is servo controlled.
Capping	3-finger gripper controlled by servo motor
Power connections	220 – 240 V mono phase, 15 Amps
Frequency	50-60 Hz
Compressed air	50 Lpm, 6 bar
Number of filling stations	1
Filling & capping speed	Up to 10 ppm depending on the pouch size and spout and the human operator.
Materials used	Mainly built out of stainless steel 304. All parts in contact with the product will be in stainless steel 316L or FDA Approved plastics. PLC and servo-motors are Siemens, Stepper motors are JVL
Remote access	Standard available on all our machines
Optional	Nitrogen shot after filling Safety curtain



Spout & filling machinery

	<p>Trolley</p> <p>Plate squeezers to reduce headspace (only available with trolley)</p> <p>Printer bracket (only available with trolley)</p> <p>Printer bracket for corner spouted pouches (only available with trolley)</p> <p>Bottle/Jar/Container holder (only available with trolley)</p>
--	---

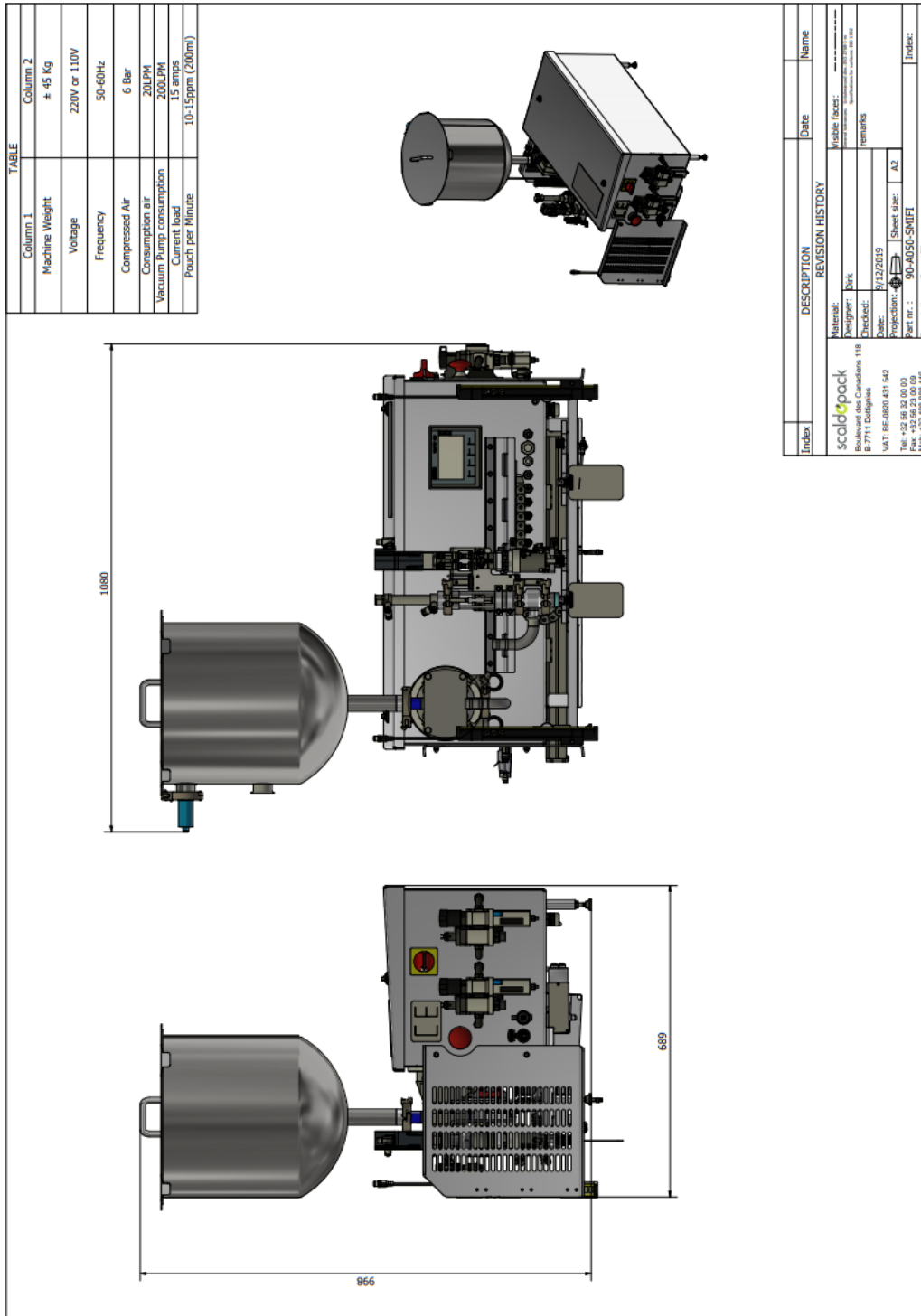
Description	Specifications
Machine weight	+/- 100,00 kg
Surface space needed	0,85 m x 0.80 m
Height needed	2,00 m

Machine Compliance:

- Machinery Directive 2006/42/EG
- Machine complies with EU, UL and CSA Standards upon request.
- CE marked



### Machine Layout:



All information and measurements mentioned in this document are merely indicational and for informational purposes only. Information and measurements in this document can be subject to changes without further notice. For the latest info always revert to Scaldopack.